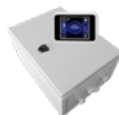


INDUSTRIAL MODULAR

Modular construction air curtains for installation on industrial doors up to 8 m high and up to 12 m wide



STRA1 control



IC controls

Robust construction with modular design, to be able to adjust the curtain to the size of the door. IP54 protection in all models except version with electric coil (IP20). Covers up to 12 m wide door, installing curtains on both sides. The equipment works without special controls. The controls add additional functions.

Construction:

- Galvanized steel frame painted in RAL 9016 polyester.
- Design for vertical or horizontal installation.
- 1,65 m module with 3 fans.
- 2,2 m module with 4 fans.
- 2,75 m module with 5 fans.

Version in accordance with heating options:

- S0: Environmental. Air recirculation.
- E1: Electrical. Incorporates electrical resistances.
- V2: By water. It incorporates water batteries up to 110 °C.
- P2: By water. Incorporates water batteries up to 110 °C with antifreeze.

Order code

IND	-	100	-	S0	-	0
↓		↓		↓		↓
INDUSTRIAL MODULAR: Modular construction air curtains for installation on industrial doors up to 8 m high and up to 12 m wide		150: Length 165 cm 200: Length 220 cm 250: Length 275 cm		S0: No heater battery E1: Electrical battery V2: Water battery 100 °C P2: Water battery 100 °C with antifreeze		0: White RAL 9016 1: Galvanized

Technical characteristics

Model	Height door (m)	Maximum airflow (m ³ /h)	NPS 5 m dB (A)	Heat power* (kW)	Battery voltage (V)	Battery consumption (l)	Motor voltage (V) - (HZ)	Motor consumption (W) / (l)	Weight (Kg)
IND-150-S0	7.5	11550	63	-	-	-	1x230 - 50/60	900 / 3.9	51
IND-150-E1	7.5	11550	63	24.3	3x400	39.1	1x230 - 50	900 / 3.9	55
IND-150-V2	7.5	10300	63	75.2	-	-	1x230 - 50/60	900 / 3.9	60
IND-150-P2	7.5	10300	63	75.2	-	-	1x230 - 50/60	900 / 3.9	60
IND-200-S0	8.0	15100	65	-	-	-	1x230 - 50/60	1200 / 5.1	69
IND-200-E1	8.0	15100	65	32.4	3x400	52.2	1x230 - 50	1200 / 5.1	74
IND-200-V2	8.0	13700	64	101.0	-	-	1x230 - 50/60	1200 / 5.4	78
IND-200-P2	8.0	13700	64	101.0	-	-	1x230 - 50/60	1200 / 5.4	78
IND-250-S0	7.5	18500	67	-	-	-	1x230 - 50/60	1400 / 6.5	83
IND-250-E1	7.5	18500	67	40.5	3x400	65.1	1x230 - 50	1400 / 6.5	89
IND-250-V2	7.5	17000	66	127.0	-	-	1x230 - 50/60	1400 / 6.7	98
IND-250-P2	7.5	17000	66	127.0	-	-	1x230 - 50/60	1400 / 6.7	98

* The heating powers of water batteries are taken with a 90/70 °C water circuit and air inlet at 15 °C.

Water battery technical characteristics with temperature gradient 80/60 °C

Model	Airflow ref. (m ³ /h)	Heat power (kW)	Outlet temperature (°C)	Water level (l/s)	Loss of load (kPa)
IND-150-V2	10300	62.9	34.1	0.76	18
IND-200-V2	13700	84.6	34.3	1.03	14
IND-250-V2	17000	106.0	34.5	1.29	11

Air inlets to +15 °C.

Water battery technical characteristics with temperature gradient 110/80 °C

Model	Airflow ref. (m ³ /h)	Heat power (kW)	Outlet temperature (°C)	Water level (l/s)	Loss of load (kPa)
IND-150-P2	10300	91.3	43.6	0.75	16
IND-200-P2	13700	123.0	43.9	1.0	12
IND-250-P2	17000	154.0	44.3	1.26	10

Air inlets to +15 °C.

Electrical battery technical characteristics

Model	Airflow ref. (m ³ /h)	Heat power (kW)	Increase temperature (°C)
IND-150-E1	11550	24.3	6.3
IND-200-E1	15100	32.4	6.4
IND-250-E1	18500	40.5	6.5

Control accessories



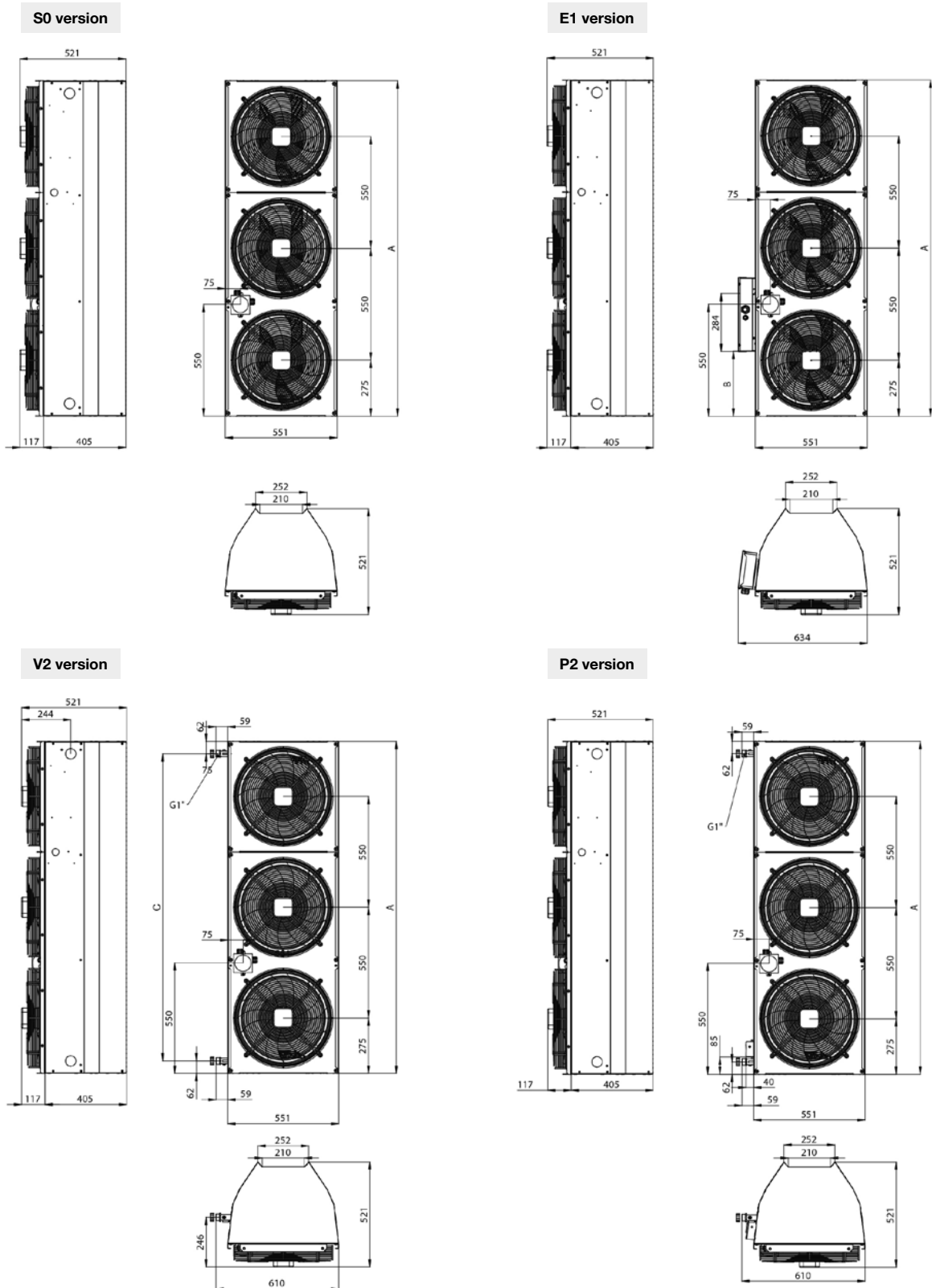
Contact box accessories for electric batteries

Accessory model	Finish	Courtain
IND-CAJA-BAT-E-25-0	White RAL 9016	1 u. for each module 150 or 200
IND-CAJA-BAT-E-25-1	Galvanized	
IND-CAJA-BAT-E-40-0	White RAL 9016	1 u. for each module 250
IND-CAJA-BAT-E-40-1	Galvanized	

Mounting accessories

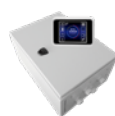
Installation type	Mounting accessory	Finish	Number of units required
Horizontal installation bracket. Wall moorings.	IND-SOP-H-PARED-0	White RAL 9016	No. of modules + 1
	IND-SOP-H-PARED-1	Galvanized	
Horizontal installation bracket. Ceiling moorings.	IND-SOP-H-TECHO-0	White RAL 9016	No. of modules + 1
	IND-SOP-H-TECHO-1	Galvanized	
Fixed vertical installation bracket	IND-SOP-V-FIJA-0	White RAL 9016	1 for vertical column of modules
	IND-SOP-V-FIJA-1	Galvanized	
Adjustable vertical installation bracket	IND-SOP-V-AJUST-0	White RAL 9016	1 for vertical column of modules
	IND-SOP-V-AJUST-1	Galvanized	
	IND-SOP-V-AJUST-4M-0	White RAL 9016	1 for module from 4 m high
	IND-SOP-V-AJUST-4M-1	Galvanized	

Dimensions mm



	A	B	C
IND-150	1650	320	1526
IND-200	2200	870	2076
IND-250	2750	870	2626

Technical characteristics controls



Optional controls (control - battery)

	STRA1	IC-C	IC-S	IC-M
Control type	Manual	Manual / Auto	Associated with IC-C	MODBUS RTU
Speeds	5	5	5	5
Control of batteries by air inlet / outlet of the curtain	-	Included	Included	Included
Control of batteries by means of air temperature sensor of the room	-	NTC-10K accessory	NTC-10K accessory	NTC-10K accessory
Battery control by room temperature thermostat	-	TER-P accessory	TER-P accessory	TER-P accessory
Power control of electric batteries	-	IND-CAJA-BAT-E. accessory	IND-CAJA-BAT-E. accessory	IND-CAJA-BAT-E. accessory
Electric battery regulation stages	-	2	2	2
On/Off regulation water battery valve	RT-3-15 + TER-P accessories	RT-3-15 accessory	RT-3-15 accessory	RT-3-15 accessory
0-100% regulation water battery valve	-	ZV-3-24V-12 accessory	ZV-3-24V-12 accessory	ZV-3-24V-12 accessory
Compatible with door contact	DK-1 or DS	DK-1 or DS	DK-1 or DS	DK-1 or DS
Contact for external control	NC/NO contact	YES	YES	YES
Built-in timer	-	YES	-	-
Maintenance indication	YES	YES	-	-
Open door indication	-	YES	-	-
Electrical battery cooling control	-	YES	YES	YES
Anti-frost control	-	YES	YES	-
Module interconnection	-	IC-S controls only	Needs 1 IC-C control	YES
Visual operating indicator	-	YES	-	-
Control panel lock	-	YES	-	-
MODBUS RTU connection	-	YES	YES	YES

Model	Power supply	IP protection	Max. current (A)	Dimensions mm AxBxC	Weight (Kg)
STRA1-075L22	1x230V 50/60Hz	IP54	7.5	200x305x155	8
STRA1-160L20	1x230V 50/60Hz	IP54	16.0	300x425x235	20
IC-C-AC5-04	1x230V 50/60Hz	IP66	4.0	423x300x211	14
IC-C-AC5-07	1x230V 50/60Hz	IP66	7.0	423x300x211	15
IC-C-AC5-16	1x230V 50/60Hz	IP66	16.0	423x300x211	23
IC-S-AC5-04	1x230V 50/60Hz	IP66	4.0	423x300x211	14
IC-S-AC5-07	1x230V 50/60Hz	IP66	7.0	423x300x211	15
IC-S-AC5-16	1x230V 50/60Hz	IP66	16.0	423x300x211	23
IC-M-AC5-04	1x230V 50/60Hz	IP65	4.0	423x300x211	14
IC-M-AC5-07	1x230V 50/60Hz	IP65	7.0	423x300x211	15
IC-M-AC5-16	1x230V 50/60Hz	IP65	16.0	423x300x211	23