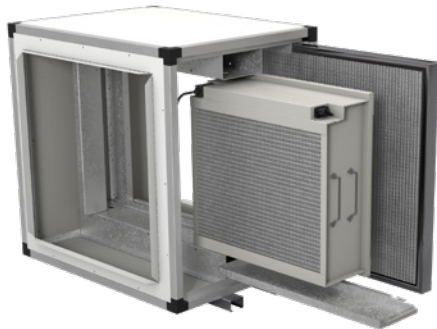
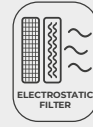


MFE

Filter units without fans, with high efficiency electrostatic filters



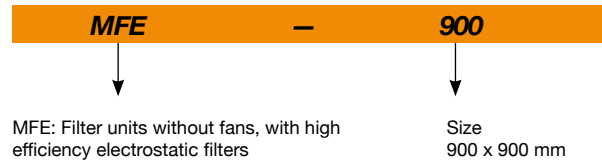
Filter units without a fan but with high efficiency electrostatic filters that are especially designed for cleaning, disinfecting and purifying indoor air at locations containing a high amount of grease or suspended particulate matter.

Characteristics:

- Aluminium profile structure.
- Covers with a high quality, 25 mm thick acoustic casing made of prefinished sheet.
- Inspection panel for maintenance and filter replacement (minimum recommended opening on the side of 1 m).

- Modular construction for use in combination with different air treatment units.
- Supply voltage at 230 V 50/60 Hz.
- Temperature of the air to be carried: -20 °C to +50 °C.
- Compatible with most existing aluminium profile type models: CJK/EC, CJK/FILTER/EC, UPC/EC, CJBX/AL, CJBD/AL, CJDXR/AL, UFRX/ALS...
- Washable, anti-grease pre-filter.
- High efficiency (95% ePM1) electrostatic filter device with built-in thermal sensor.
- Grease trays with drainage outlet.

Order code



Filter characteristics

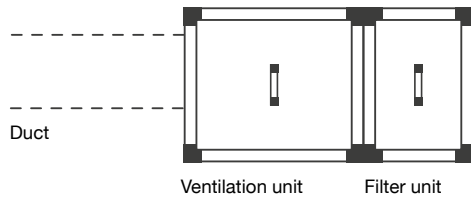
ELECTROSTATIC FILTER	ePM ₁				
	95%	90%	80%	70%	
Filtration class EN 779	-	-	F9	F8	F7
Air speed (m/s)	1	2	2.5	3	4
Air flow capacity (%)	40	50	65	75	100
Pressure drop (Pa)	10	17	24	37	64

Technical characteristics

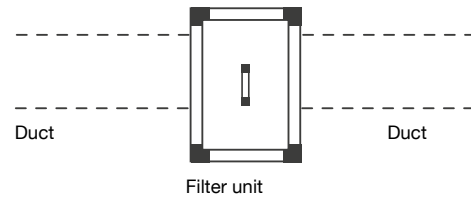
Model	Cross section (mm)		Approx. weight (Kg)	Maximum flow rate (m ³ /h)		Electrical consumption (W)
	Height	Width		Grease particles	Dry particles	
MFE-490	490	490	45	525	700	9
MFE-500	500	500	49	525	700	9
MFE-550	550	550	50	525	700	9
MFE-605	605	605	60	675	900	9
MFE-680	680	680	73	1575	2100	16
MFE-700	700	700	97	1575	2100	16
MFE-855	855	855	118	2550	3400	16
MFE-900	900	900	153	2550	3400	16
MFE-1000	1000	1000	185	3675	4900	43
MFE-1195	1195	1195	252	6300	8400	64
MFE-1250	1250	1250	274	6990	9320	64
MFE-1450	1450	1450	330	10200	13600	64
MFE-1670	1670	1670	424	14625	19500	109

Installation examples

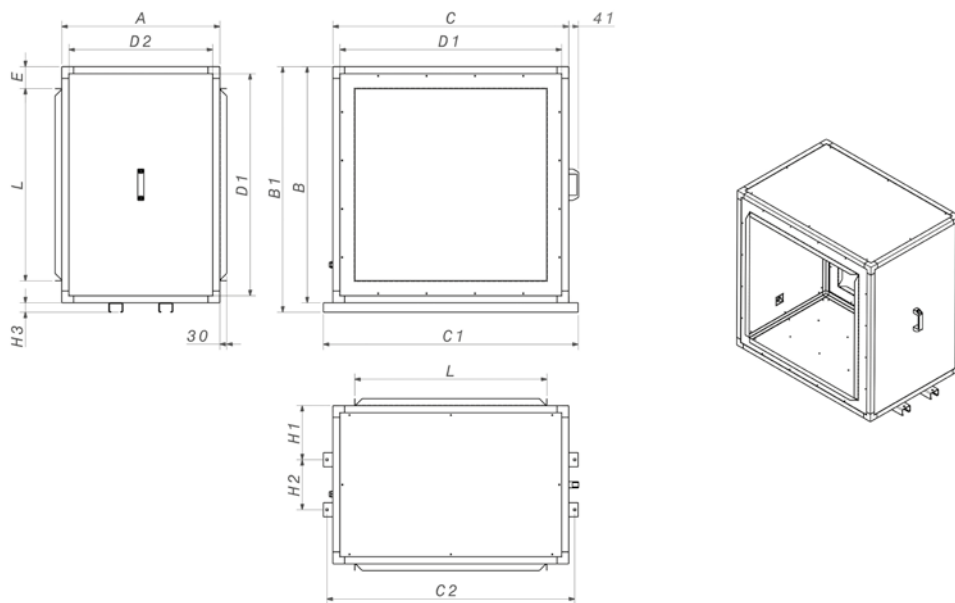
Set-up next to a ventilation unit



Set-up between ducts

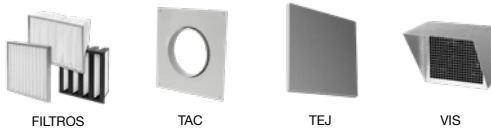


Dimensions mm



	A	B	B1	C	C1	C2	D1	D2	E	L	H1	H2	H3
MFE-490	510	490	-	490	-	-	430	450	83.4	323.2	-	-	-
MFE-500	500	500	-	500	-	-	420	420	58.4	383.2	-	-	-
MFE-550	510	550	-	550	-	-	490	450	83.4	383.2	-	-	-
MFE-605	510	605	-	605	-	-	545	450	106.9	391.2	-	-	-
MFE-680	510	680	-	680	-	-	620	450	84.4	511.2	-	-	-
MFE-700	700	700	-	700	-	-	620	620	94.4	511.2	-	-	-
MFE-855	670	855	895	855	938	908	795	610	84.4	686.2	229	212	40
MFE-900	900	900	-	900	-	-	820	820	106.9	686.2	-	-	-
MFE-1000	670	1000	1040	1000	1080	1050	940	610	92.9	814.2	229	212	40
MFE-1195	670	1195	1235	1195	1280	1245	1115	590	131.9	931.2	229	212	40
MFE-1250	670	1250	1290	1250	1350	1320	1170	590	168.9	912.2	229	212	40
MFE-1450	670	1450	1490	1450	1550	1520	1370	590	169.4	1111.2	229	212	40
MFE-1670	670	1670	1710	1670	1770	1740	1590	590	137.75	1394.5	229	212	40

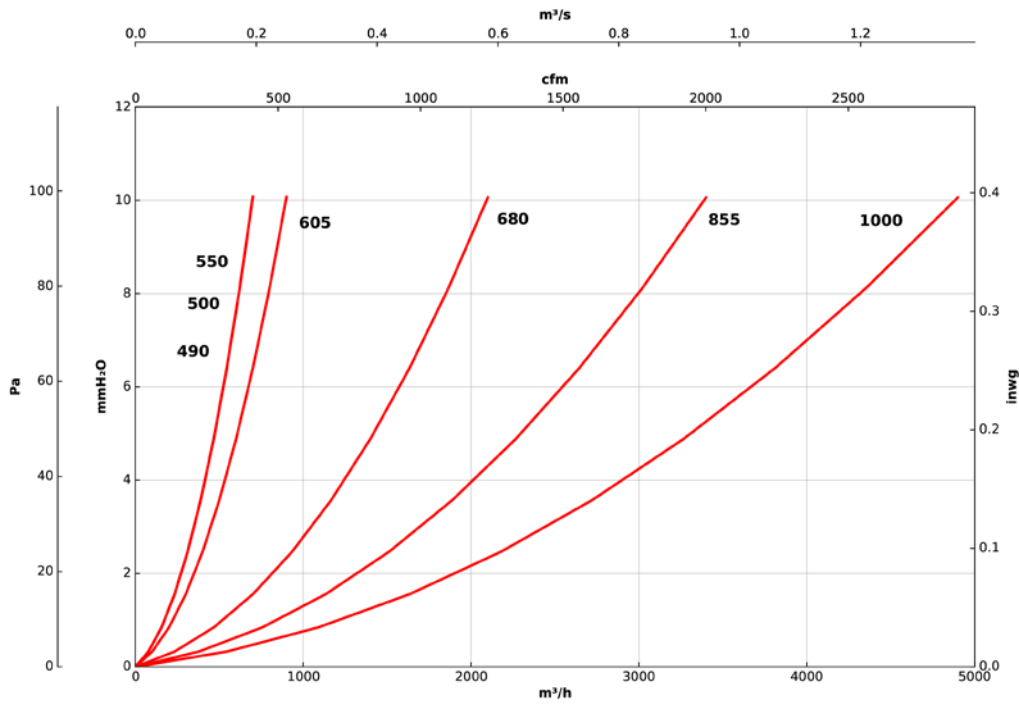
Accessories



Load loss characteristic curves

Q= Flow rate in m³/h, m³/s and cfm Pe= Static pressure in mm H₂O, Pa and inwg

Filter modules: G2+FE



Filter modules: G2+FE

