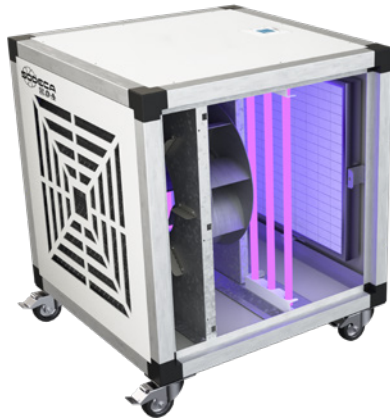
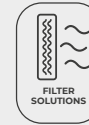


# UPH/EC

Mobile air purifying units



Mobile air purification units with EC Technology motors and a 25 mm thick acoustically insulated casing to reduce noise.

**Characteristics:**

- 40 mm aluminium profile structure.
- Wheel kit.
- Plug & Play system with integrated control.
- Covers with a high quality, 25 mm thick acoustic casing made of prefinished sheet.
- Backward curved impeller.
- Filtration stages, depending on model:
  - F9.
  - HEPA H14.
  - Active carbon filter for odour removal.
  - Adjustable filter change alarm.
  - Germicidal chamber with UVc ultraviolet lamps (256 nm), depending on model.
  - Inspection cover for filter maintenance and replacement.

- Air inlet nozzle with diffusers that increase the efficiency of the fan.

**Motor:**

- High efficiency external rotor EC Technology motors, adjustable via 0-10 V signal.
- Single phase 200-240 V 50/60 Hz.
- Maximum temperature of air to be carried: -25 °C +60 °C.

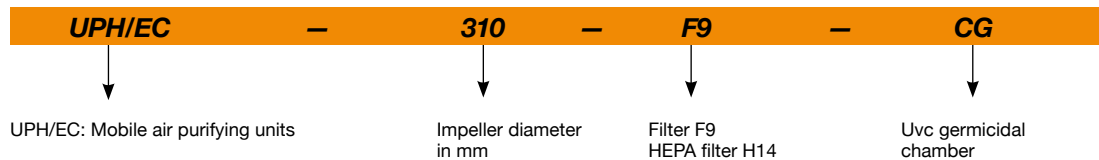
**Finish:**

- Structure of anodised aluminium profiles and pre-lacquered sheet metal with 25 mm thermal and acoustic insulation panels.

**On request:**

- Particle sensor for automatic control.
- Different stages of filtration.

## Order code



## Filter characteristics

Filters	EN 779 Em	EN 1822	ISO 16890			
			ISO ePM <sub>1</sub>	ISO ePM <sub>2,5</sub>	ISO ePM <sub>10</sub>	ISO COARSE
F9	95%	-	>80%	>95%	>95%	-
HEPA H14	-	>99.995%	-	-	-	-

## Technical characteristics

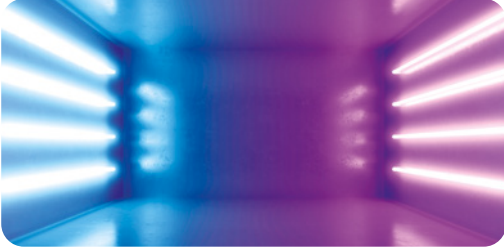
Model	Recommended effective working area <sup>1</sup> (m <sup>2</sup> )		Speed (r/min)	Maximum power (W)	Power supply	Sound pressure level at 50% of max speed. <sup>2</sup> dB (A)	Maximum flow rate (m <sup>3</sup> /h)		Approx. weight (Kg)
	Filters (F9)	Filters (H14)					Filters (F9)	Filters (H14)	
UPH/EC-220	50	-	3265	176	200-240V 50/60Hz 1Ph	48	420	-	32
UPH/EC-250	60	-	2850	180	200-240V 50/60Hz 1Ph	49	500	-	33
UPH/EC-310	65	55	1920	175	200-240V 50/60Hz 1Ph	47	550	450	34
UPH/EC-400	190	155	1550	460	200-240V 50/60Hz 1Ph	47	1600	1300	68

<sup>1</sup>Recommended effective working area with a 3-meter-high premises.

<sup>2</sup> Irradiated sound pressure level in dB(A) at a distance of 3 m.

## Technical characteristics of the UVC germicidal chamber

According to the model, these purification units can integrate a germicidal chamber, built with UVC ultraviolet lamps in a 256 nm spectrum, a wave width indicated to inactivate a wide variety of microorganisms by absorbing short wavelength energy through DNA and RNA.



Model	Number of lamps	Total electrical power (W)	Total Uvc radiation power (W)	Radiation dose (mJ/cm <sup>2</sup> ) *
UPH/EC-220	6	54	16.8	7.2
UPH/EC-250	6	54	16.8	6.0
UPH/EC-310	6	54	16.8	6.7
UPH/EC-400	4	102	28	5.4

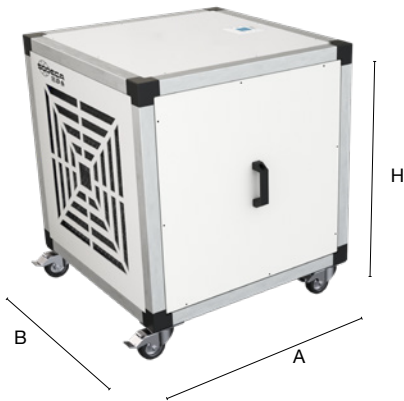
Minimum dose calculated based on the maximum flow rate.



### Erp. (Energy Related Products)

Information on Directive 2009/125/EC can be downloaded from the SODECA website or the QuickFan selector programme.

## Dimensions mm



	A	B	H
UPH/EC-220	500	542	642
UPH/EC-250	500	542	642
UPH/EC-310	500	542	642
UPH/EC-400	700	742	842

Data subject to change without prior notice.